

Franklin Wireless S600C Modem Users Guide





Table of Contents

Windows Installation	2
Installing the CDMA Driver Package	2
Download the File(s)	2
Install the Driver Package	2
Checking the Installation	5
Checking Your Connection	6
Linux Installation	8
Introduction	8
Ubuntu 10.4 Installation Instructions	8
Ubuntu 11.10 Installation Instructions	12
Understanding the LED Lights on Your Device	15
Additional Support Links	15

Windows Installation

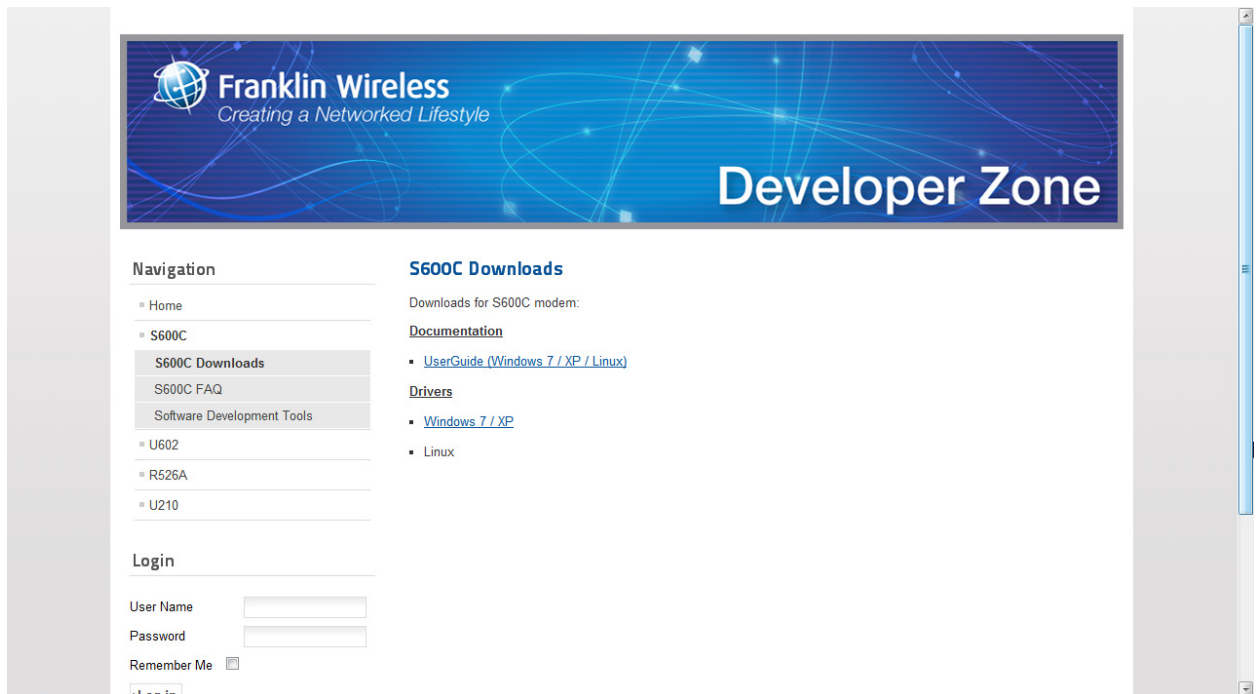
This section will help users to install the S600C drivers step by step on Windows XP.

Important: Do not plug in the S600C modem into your computer until driver installation is complete. Please follow each step carefully to ensure proper installation.

Installing the CDMA Driver Package

Download the File(s)

For Windows 7 and Windows XP users, download and unzip the CDMA Driver Package v2.3.2.0 from www.franklinwireless.com/support.

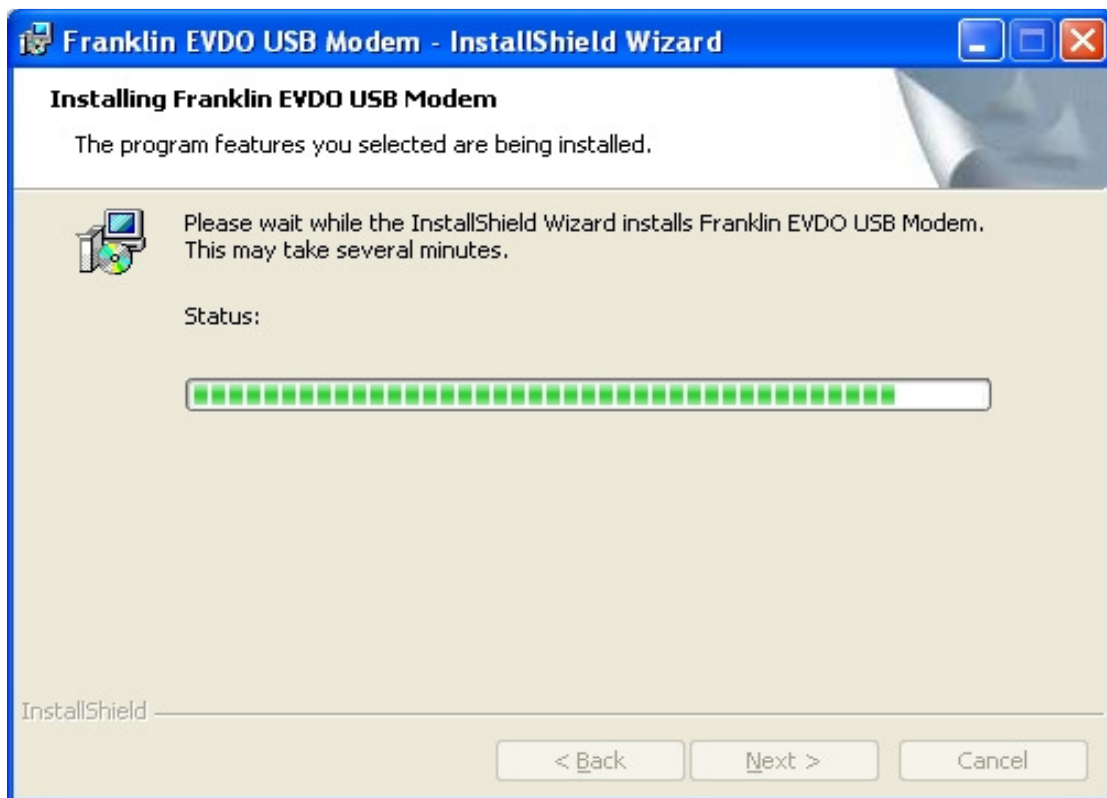


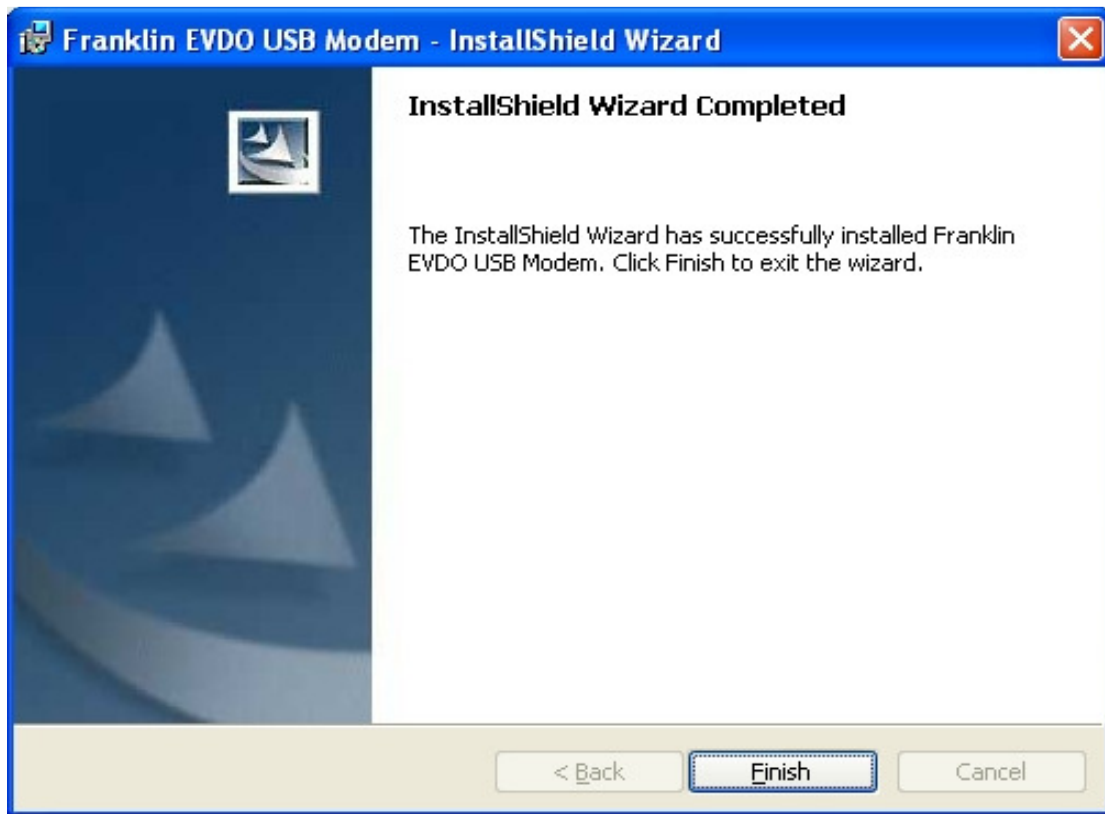
Install the Driver Package

Once you have downloaded the Driver Package, run the executable file (.exe) to extract all of the necessary files.

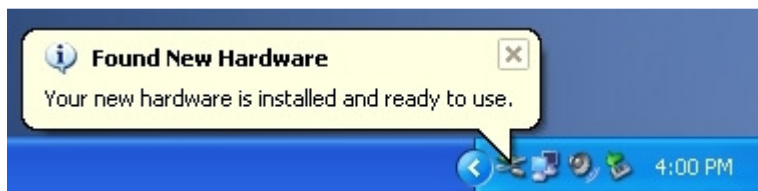
Name	Type	Compressed size	Password ...	Size	Ratio	Date modified
DIFM_NOMB_V2_3_2_0.exe	Application	1,036 KB	No	1,051 KB	2%	11/4/2011 10:12 AM
DIFM_NOMB_V2_3_2_0.msi	Windows Installer Package	2,373 KB	No	2,789 KB	15%	11/4/2011 10:15 AM
DIFM_NOMB_V2_3_2_0.msm	MSM File	2,268 KB	No	2,485 KB	9%	11/4/2011 10:15 AM
DIFM_NOMB_V2_3_2_0_with_fgS.msi	Windows Installer Package	2,373 KB	No	2,789 KB	15%	11/4/2011 10:16 AM
DIFM_NOMB_V2_3_2_0_with_fgS.msm	MSM File	2,268 KB	No	2,485 KB	9%	11/4/2011 10:16 AM
guid.txt	Text Document	1 KB	No	1 KB	68%	11/4/2011 10:16 AM

Follow the Setup Wizard to complete the driver installation.



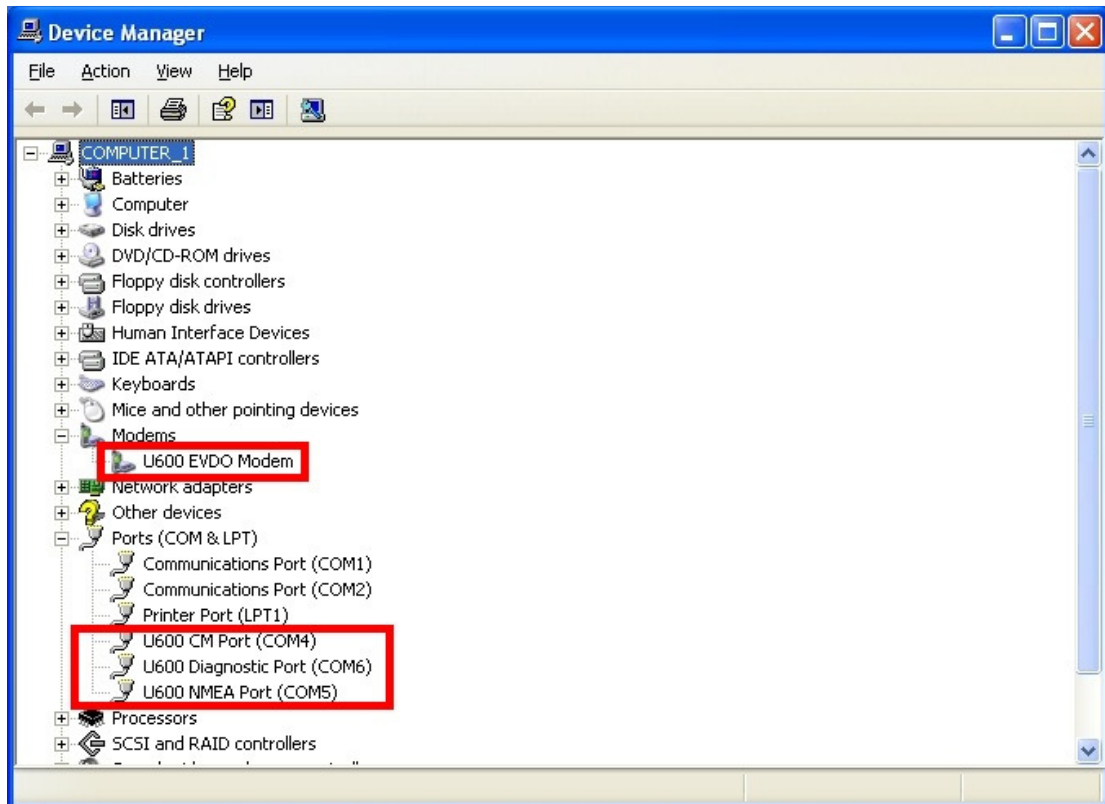


Connect the device to the computer using the USB cable and allow Windows to complete the installation.



Checking the Installation

Open the 'Device Manager' and ensure that the device has been installed correctly. You should see the following ports under the 'Modems' and 'Ports (COM & LPT)' sections. Do not be concerned that your Device Manager reflects "U600" instead of "S600C" – this will be updated with the Firmware.

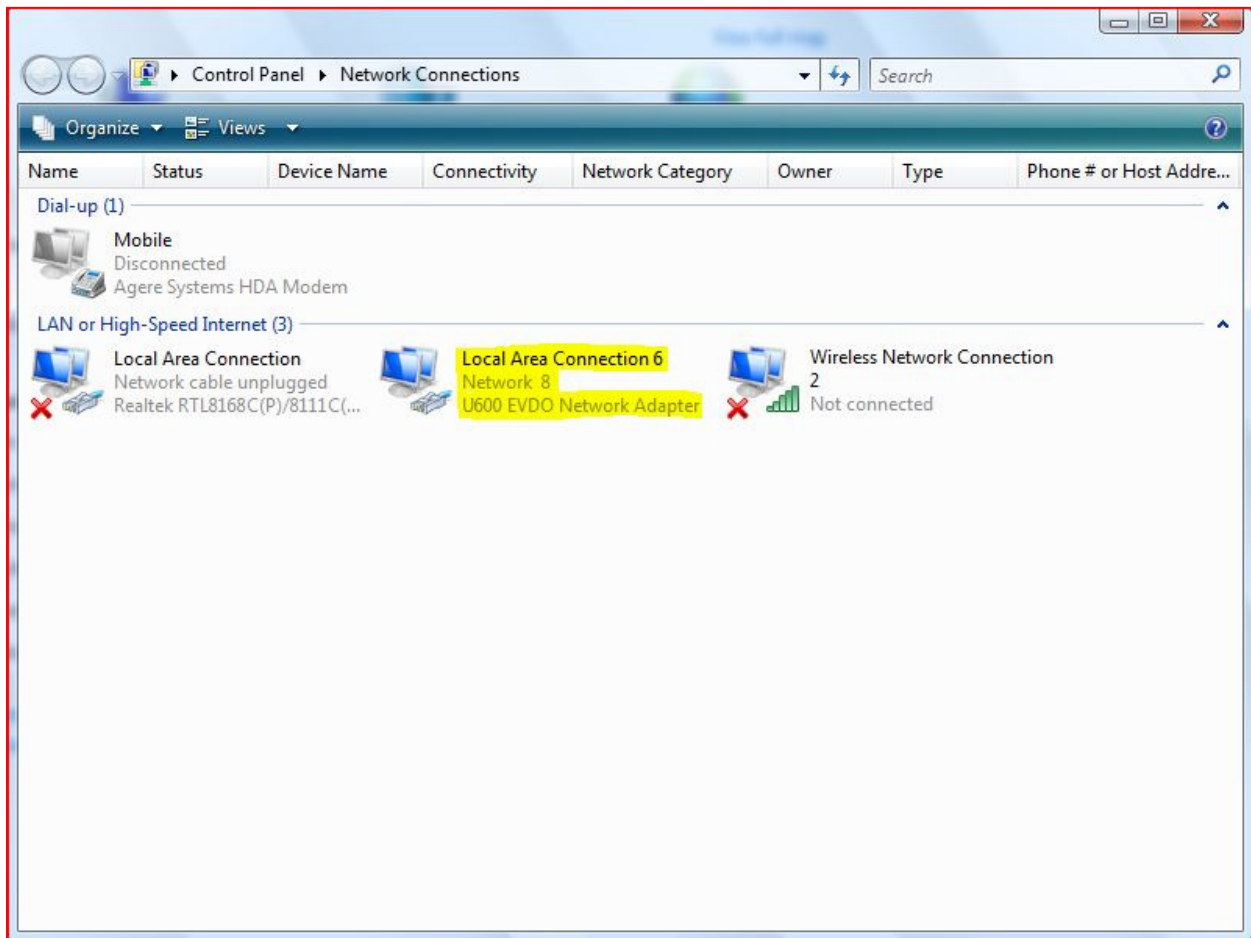


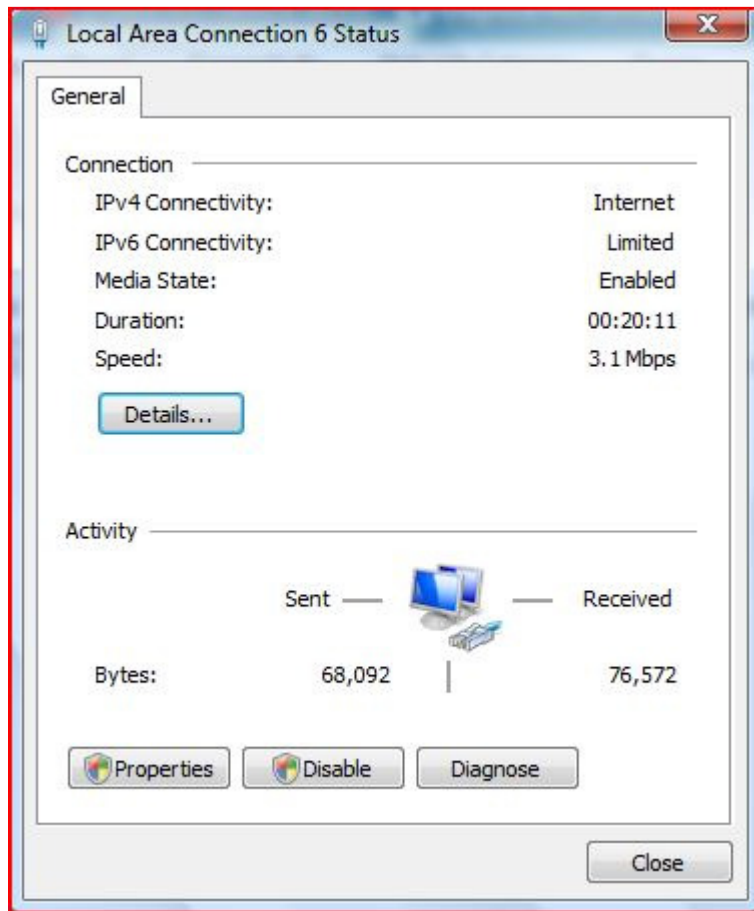
The device should register and connect to the internet automatically.



Checking Your Connection

To check your connection, go to **Start>Control Panel>Network and Sharing Center>Manage Network Connections**. For Windows XP users, go to **Settings>Network Connections**.





Linux Installation

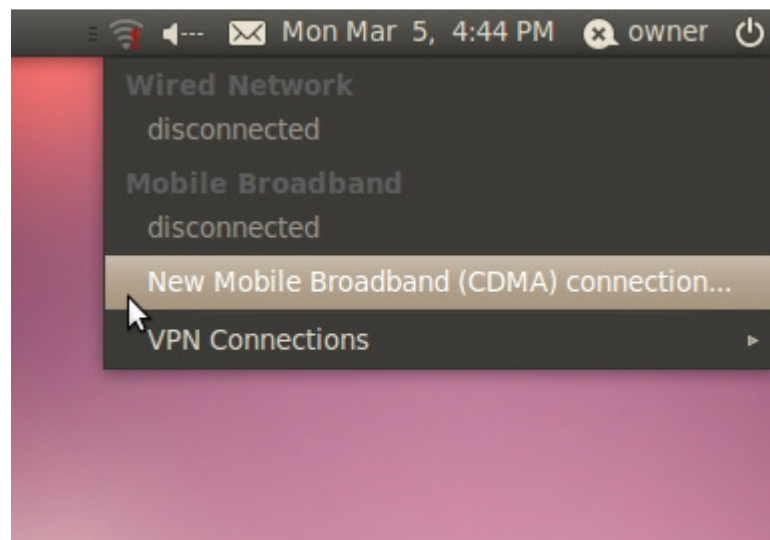
Introduction

This section describes how to set up and connect to the Internet with your device on the Linux platform.

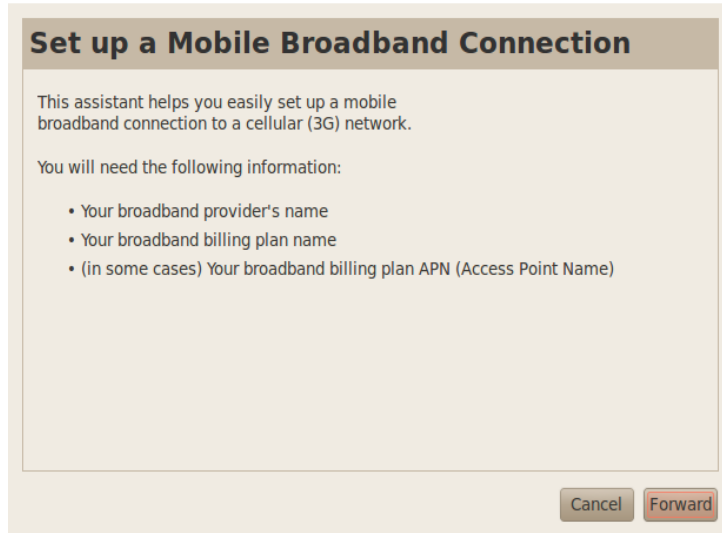
Please note that this document is provided as a guide for current Linux users to be able to use the S600C on any graphical Linux distribution. Franklin Wireless recommends Linux Ubuntu 10.4 or 11.10. For setup on other Linux distributions, please refer to the Additional Support Links section. Instructions in this document are only meant to guide the user and its information may change at any time.

Ubuntu 10.4 Installation Instructions

1. Plug the S600C into the computer and allow the device to install automatically.
2. Click on the network connections icon and select 'New Mobile Broadband (CDMA) connection'.



3. The 'Set up a new Mobile Broadband Connection' wizard should appear. Click on 'Forward'.



Set up a Mobile Broadband Connection

This assistant helps you easily set up a mobile broadband connection to a cellular (3G) network.

You will need the following information:

- Your broadband provider's name
- Your broadband billing plan name
- (in some cases) Your broadband billing plan APN (Access Point Name)

Cancel Forward

4. Select 'United States' from the Country List and click on 'Forward'.



Choose your Provider's Country

Country List:

Country
Tunisia
Turkey
Uganda
Ukraine
United Arab Emirates
United States
Uruguay
Uzbekistan
Venezuela
Vietnam

Cancel Back Forward



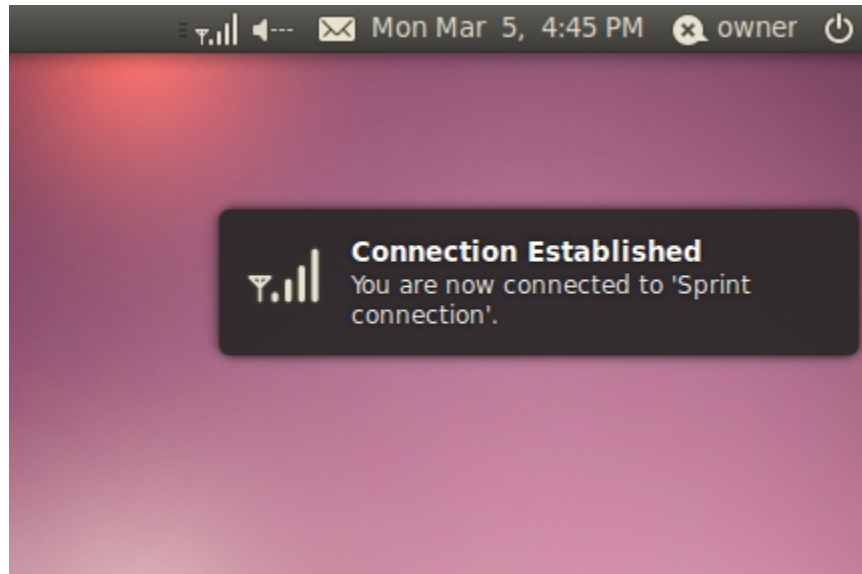
5. Select 'Sprint' from the provider list and click on 'Forward'.

A dialog box titled "Choose your Provider" with a light beige background. It contains a radio button labeled "Select your provider from a list:" which is selected. Below this is a list box titled "Provider" containing the following options: "Jump Mobile (Prepaid)", "Leap Wireless", "MetroPCS", "Mid-Rivers Cellular", "Sprint" (which is highlighted), "US Cellular", and "Verizon". Below the list box is another radio button labeled "I can't find my provider and I wish to enter it manually:". Below this is a text input field labeled "Provider:". At the bottom right are three buttons: "Cancel", "Back", and "Forward".

6. Confirm the mobile broadband settings and then click on 'Apply'.

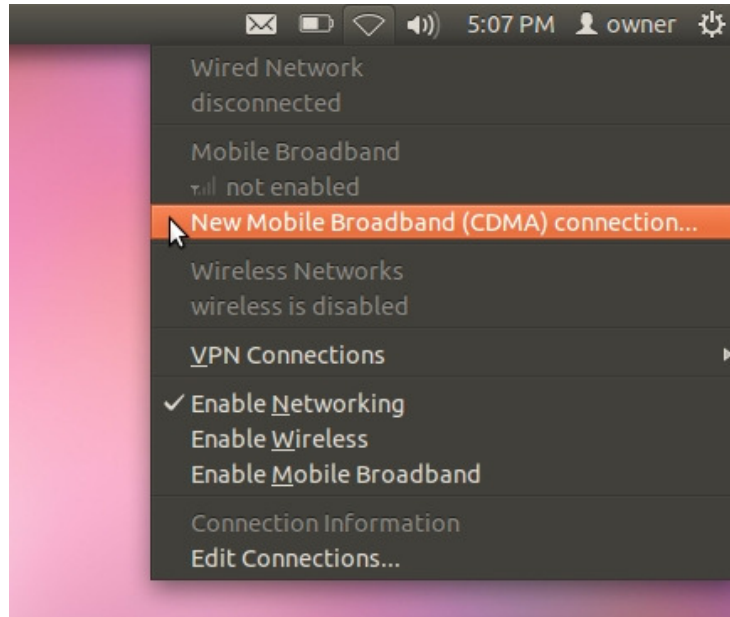
A dialog box titled "Confirm Mobile Broadband Settings" with a light beige background. It contains the text "Your mobile broadband connection is configured with the following settings:". Below this is the text "Your Provider:" followed by "Sprint, United States". At the bottom right are three buttons: "Cancel", "Back", and "Apply".

7. The device should connect automatically to the network.

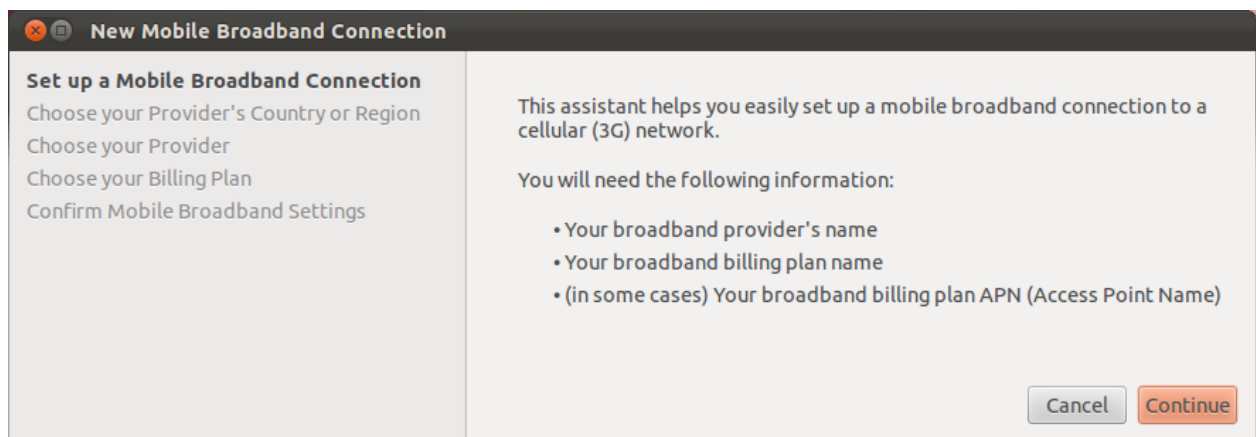


Ubuntu 11.10 Installation Instructions

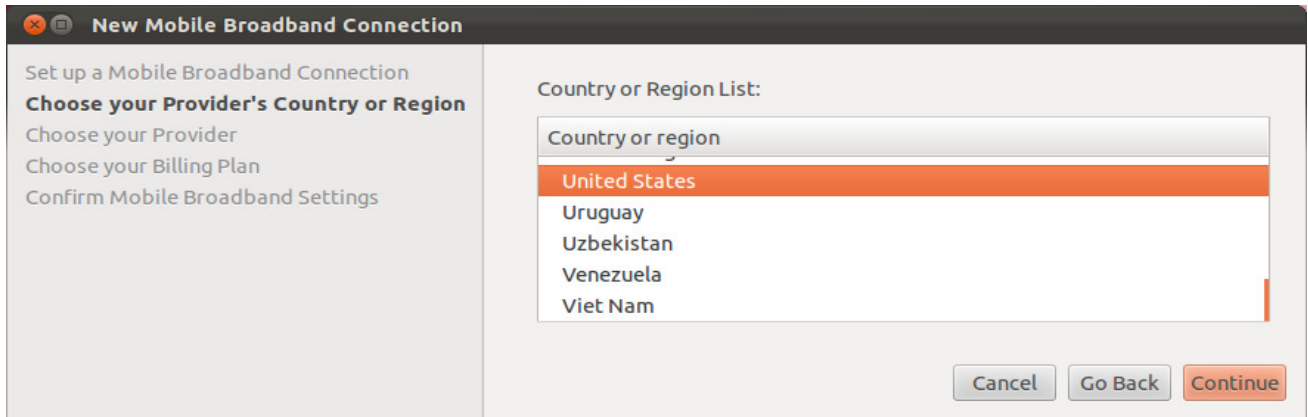
1. Plug the S600C into the computer and allow the device to install automatically.
2. Click on the network connections icon and select 'New Mobile Broadband (CDMA) connection'.



3. The 'New Mobile Broadband Connection' wizard should appear. Click on 'Continue'.



4. Select 'United States' from the Country List and click on 'Continue'.



New Mobile Broadband Connection

Set up a Mobile Broadband Connection

Choose your Provider's Country or Region

Choose your Provider

Choose your Billing Plan

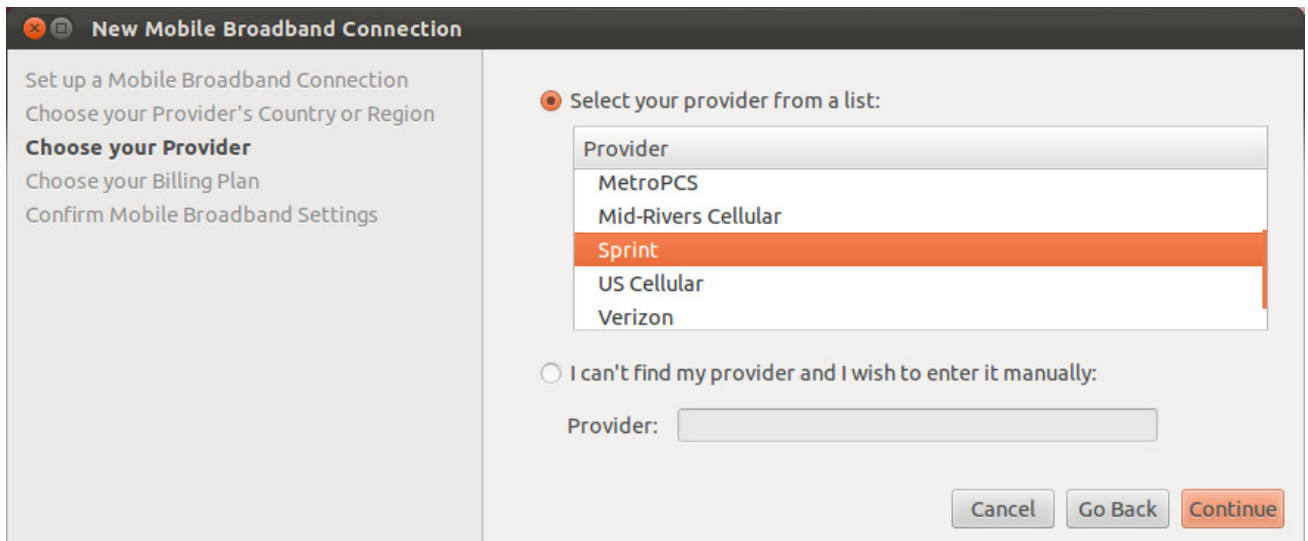
Confirm Mobile Broadband Settings

Country or Region List:

Country or region
United States
Uruguay
Uzbekistan
Venezuela
Viet Nam

Cancel Go Back Continue

5. Select 'Sprint' from the provider list and click on 'Continue'.



New Mobile Broadband Connection

Set up a Mobile Broadband Connection

Choose your Provider's Country or Region

Choose your Provider

Choose your Billing Plan

Confirm Mobile Broadband Settings

☒ Select your provider from a list:

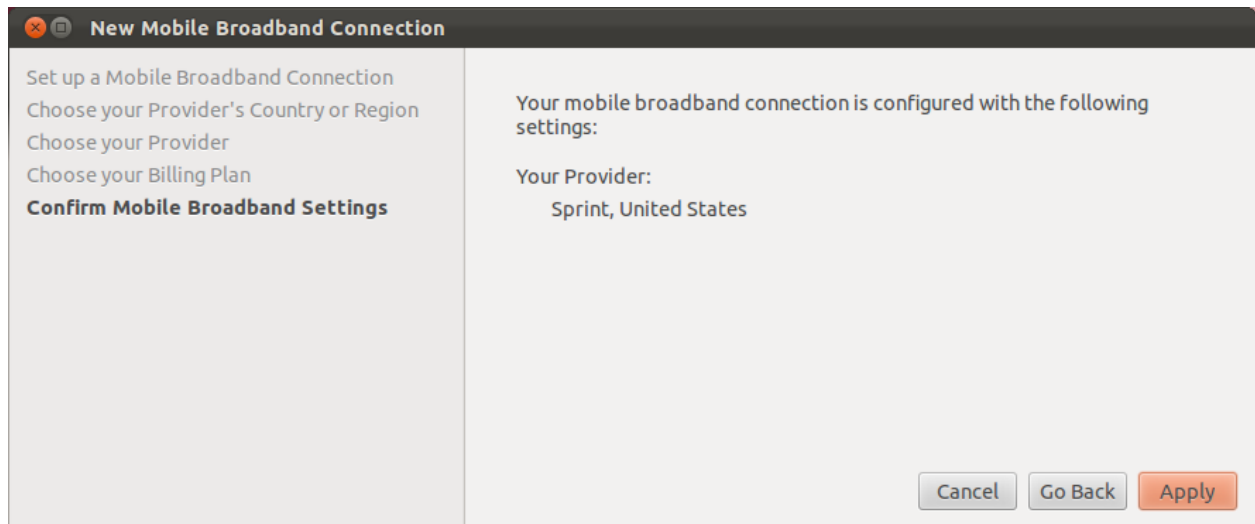
Provider
MetroPCS
Mid-Rivers Cellular
Sprint
US Cellular
Verizon

☐ I can't find my provider and I wish to enter it manually:

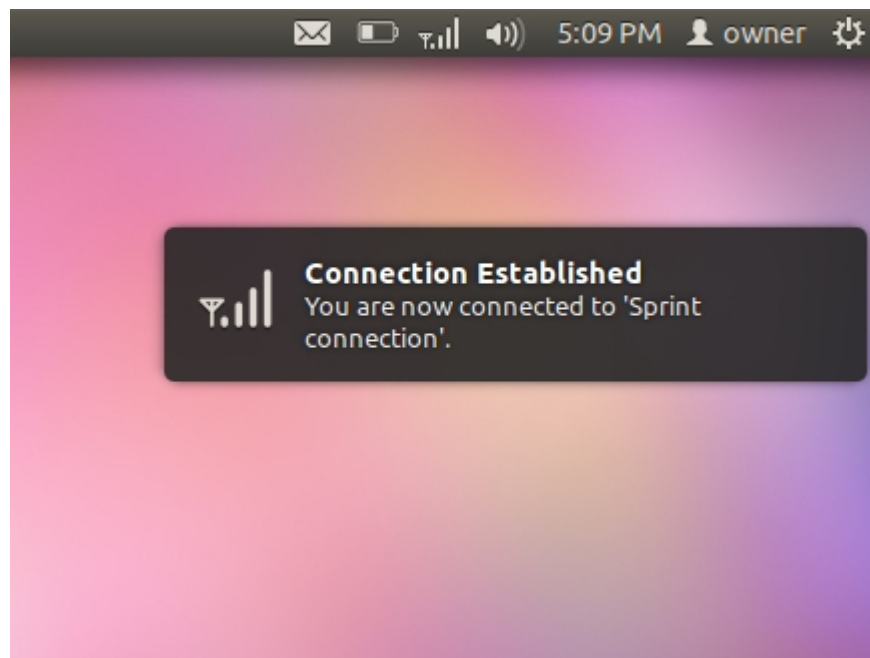
Provider:

Cancel Go Back Continue

6. Confirm the mobile broadband settings and then click on 'Apply'.



7. The device should connect automatically to the network.



Understanding the LED Lights on Your Device

The table below reflects the characteristics of the LED lights on your S600C.

CDMA Mode (3G)	CDMA 3G Enabled
3G in service and Stand by Ready to Connect	Slow Flash every 1sec
Power ON Boot and Reset 3G out of service or is still acquiring service	ON
3G CDMA No service	OFF
3G Data Connected Active	Fast Flash every 0.5sec
3G Data Connected Dormant	ON

Additional Support Links

<http://www.kernal.org/>

<https://help.ubuntu.com/>